

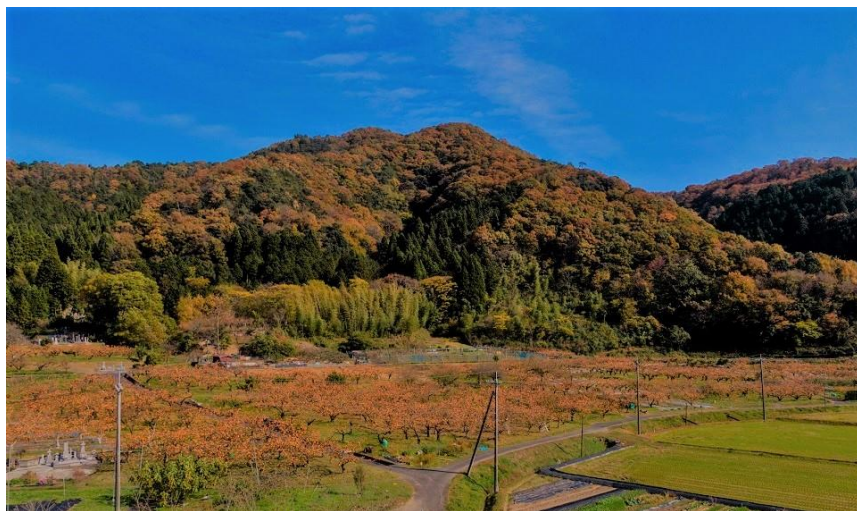
Tottori Newsletter

NOV 2021



Autumn vistas: Fall foliage woven through fields of persimmon.

Kouge, in Yazu town on the eastern side of Tottori Prefecture, is a renowned fruit growing area. Persimmons come into season in September, and by November their bright orange hue complements the stunning color of the fall foliage which spreads across the mountainsides.



The persimmon field landscapes feature as one of the selected 'Scenic byways of Japan.' The road along Route 29 is what is called an "Original Japanese Landscape," showcasing the changes in the four seasons, and the traditional way of life observed in the agricultural towns.



【Nearby Fall Foliage Spot】

■Seitoku-ji Temple

Location: Yazu Town, Seitoku 79

This grand temple is thought to have been established 1,300 years ago.

Within its grounds among its towering trees resides a large ginkgo tree, said to have been hand-planted by the Emperor Go-Daigo. The impact and brilliance of the fall foliage here is best experienced at the end of November.

【Nearby Cuisine Spot】

■Oenosato Natural Farm Resort

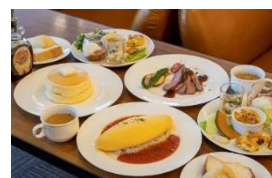
Location: Yazu Town, Hashimoto 877

Approximately 30 minutes by car from Tottori Station.

Business Hours: 10:00 to 18:00

Website: <https://www.oenosato.com/>

This complex, in its beautiful natural setting, offers restaurants, cafes, hands-on experiences, accomodation, and even caters for large groups.





The Matsuba snow crab season has begun.

【The King of Seafood: Matsuba Crab】

The catch season for this regal winter delicacy begins this month. The Matsuba crab landed in the cool waters of Tottori has a firm texture and an irresistible flavor. Every year, visitors from neighboring cities such as Osaka and Kobe are drawn to Tottori, for a taste of the renowned crab on offer here.



The acclaimed choice of the locals, this donburi rice bowl makes use of the different crab flavors and textures, from claw-to-claw.
Location: Ajigoyomi Anbe, Tottori City, Yayoi-cho 175-2

【The aquarium with 'Crab' on the center-stage: Kanikkokan. (Tottori Karo Crab Aquarium)】

Situated near Tottori Airport, this small-scale aquarium features crabs as its main attraction. From Tottori's famous Matsuba and Benizuwai crabs, giant spider crabs through to tiny specimens are all on display here. Next door is a marketplace stocking fresh seafood and produce, along with restaurants and gift-shops. Its convenient location makes it a must-stop spot before boarding your next flight.



To ensure you don't forget to disinfect, even the hand-sanitizer dispenser is a crab!

Not only crabs, but other fish living in the surrounding waters make an appearance in the neighboring tanks. The dark blue lighting makes you feel like you are deep below the ocean!



■ Kanikkokan.
(Tottori Karo Crab Aquarium)
Location: Tottori City Karo-cho 3rd block
Access: 10 minutes by bus from Tottori Airport
Business hours: 9:00~17:00
Closed on Tuesdays
Website: <https://kanikko.jp/>



For sales of fresh local produce and souvenirs:
Wattai-na Local Produce Plaza



For sales of fresh seafood, (including an on-site restaurant area): Karo-ichi Seafood Marketplace





November in Tottori Prefecture: Seasonal Information

＼The return of the illumination light display.／



At Tottori Hanakairo Flower Park, the illumination light display returns from the middle of November. Enjoy an evening visit to experience the gradually changing fall colors in concert with the beautiful lights. (Featured image is a previous display, as the design changes each year.)



■Tottori Hanakairo Flower Park
Enjoy the shifting scenery of the flowers and their Mt. Daisen backdrop throughout the year.
Admission:
Adults: 1000yen Children 500yen
Location: Nanbu-cho Tsuruda 110
A free shuttle-bus is available from Yonago Station.
Website: <https://www.tottorihanakairou.or.jp/en/>

＼Luxury Persimmon (Hanagoshō Persimmon)／



First cultivated 300 years ago in the flower region of Tottori's Yazu-cho, this variety is almost exclusively grown here. Its juicy, saccharine flavor rates it among the best of the sweet persimmon varieties.

■Check the Sites Below for the Latest Information from Tottori Prefecture

FB (Visit Tottori, Japan) : <https://www.facebook.com/tottoritouren/>

IG (Tottori Awesome) : <https://www.instagram.com/tottoriawesome/>

YouTube : https://www.youtube.com/channel/UCfFYg_iup-m1v52_LB-Eyig

■Tottori Prefecture Pictures and Videos Available from Google Drive to Use for PR

[https://drive.google.com/drive/folders/1NOUEElf93pD-](https://drive.google.com/drive/folders/1NOUEElf93pD-DnsOI_DlkIj3TCHUwuDs?fbclid=IwAR3KwRbrU5m4VFY1VPeISxiQxKmi351y4qc8mhy4hTb1KLrSMW0yqIFaA)

[DnsOI_DlkIj3TCHUwuDs?fbclid=IwAR3KwRbrU5m4VFY1VPeISxiQxKmi351y4qc8mhy4hTb1KLrSMW0yqIFaA](https://drive.google.com/drive/folders/1NOUEElf93pD-DnsOI_DlkIj3TCHUwuDs?fbclid=IwAR3KwRbrU5m4VFY1VPeISxiQxKmi351y4qc8mhy4hTb1KLrSMW0yqIFaA)

■ HP : <https://www.tottori-tour.jp/en/> (EN, KR, ZHTW, ZHCN, RU, TH) ←RENEWAL OPEN on SEP'21!!